

Android 10 Rugged Tablet

- TB85-



Quick Start Guide

V1.0

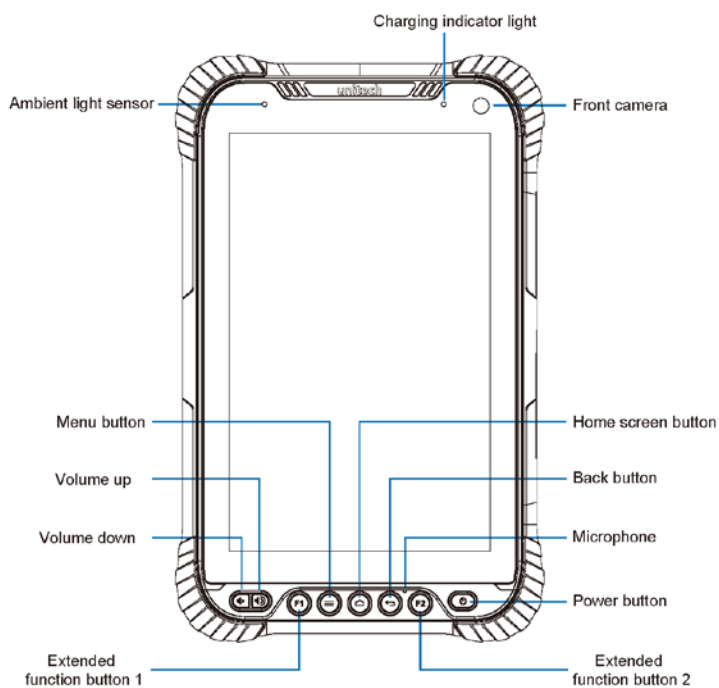
Package

Please make sure the following contents are in the TB85 Plus gift box. If something is missing or damaged, please contact your unitech representative.

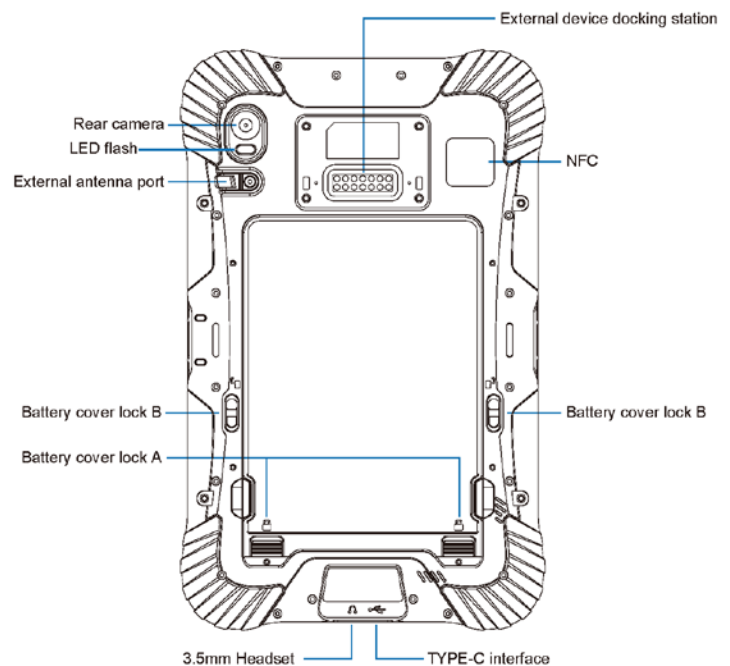
The package contents

- TB85 Android rugged tablet
- Battery
- Adapter (with plugs)
- USB type-C Cable
- Quick Start Guide
- Regulatory Compliance Statements

Product View (Front View)

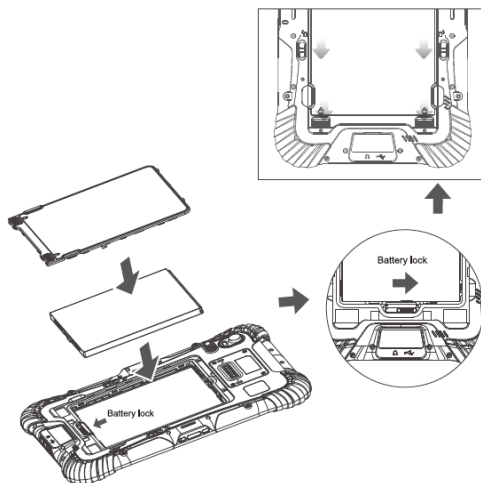


Product View (Rear View)



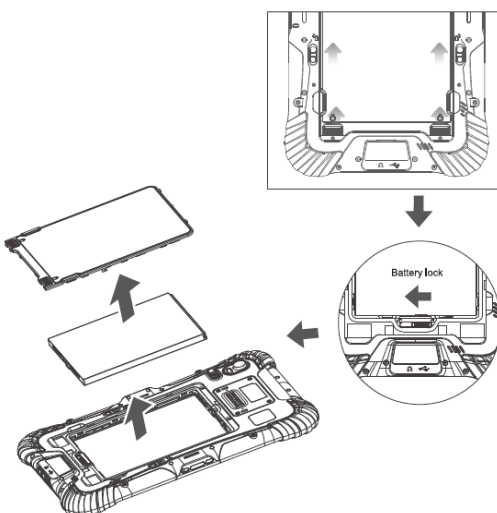
Install the Battery

1. Insert the battery
2. Push the battery lock to the close position
3. Attach the battery cover
4. Push the battery cover lock to the close position



Remove the Battery

1. Power off the device before removing the battery
2. Push the battery cover lock to the open position
3. Detach the battery cover
4. Push the battery lock to the open position
5. Remove the battery



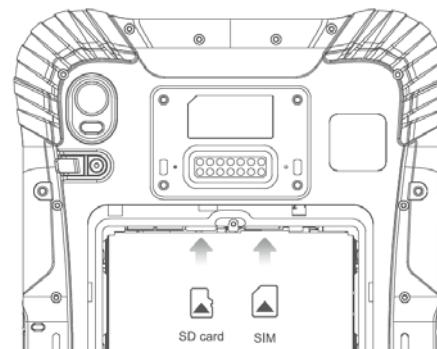
Peel off the screen protector

Before you peel off the screen protector, please note that there are two layers of the screen protector. Kindly pull on the white tab and remove the top layer of screen protector. Keep the second layer on the screen.

WARNING! Please **DO NOT** kink, shake or bend the cable. It may cause the damage.

Insert Nano SIM / Micro SD card

Please power off the device before inserting or removing the Nano SIM card or MicroSD card.



Checking LED Status

LED	Description
Red Light	■ Battery charging
Blue Light	■ Battery fully charged

For other product documentation, please scan the QR code below for more information.



- CAUTION!**
- To ensure the unit working properly, please keep all connectors away from the contaminants staying inside of them such as dust, grease, mud, and water. The negligence may cause the unit with no communication, short circuited, overheated and so on.
 - If the connector is damaged, please ensure the connector is being fully repaired before using the unit to avoid causing short circuited.