

Rugged Mobile Computer

- PA520 -



User's Manual

400892G Preliminary

Preface

About This Manual

Thank you for purchasing the unitech product.

This manual explains how to install, operate and maintain our product.

No part of this publication may be reproduced or used in any form, or by any electrical or mechanical means, such as photocopying, recording, or information storage and retrieval systems, without permission in writing from the manufacturer. The material in this manual is subject to change without notice.

Regulatory Compliance Statements



FCC Warning Statement

This device has been tested and found to comply with the limits for a Class B digital device, pursuant to part 15 of the FCC rules. These limits are designed to provide reasonable protection against harmful interference in a residential installation. This equipment generates, uses and can radiate radio frequency energy and, if not installed and used in accordance with the instructions, may cause harmful interference with radio communications. However, there is no guarantee that interference will not occur in a particular installation. If this equipment does cause harmful interference with radio or television reception, which can be determined by turning the equipment off and on, the user is encouraged to try to correct the interference by one or more of the following measures:

- Reorient or relocate the receiving antenna.
 - Increase the separation between the equipment and receiver.
 - Connect the equipment into an outlet on a circuit different from that to which the receiver is connected.
 - Consult the dealer or an experienced radio/TV technician for help.
1. This transmitter must not be co-located or operating in conjunction with any other antenna or transmitter.
 2. This device complies with FCC RF radiation exposure limits set forth for an uncontrolled environment. To maintain compliance with FCC RF exposure requirements, avoid direct contact to the transmitting antenna during transmitting.
 3. Any changes or modifications (including the antennas) made to this device that are not expressly approved by the manufacturer may void the user's authority to operate the equipment.

Operation on the 5.15 - 5.25GHz frequency band is restricted to indoor use only. The FCC requires indoor use for the 5.15-5.25GHz band to reduce the potential for harmful interference to co-channel Mobile Satellite Systems. Therefore, it will only transmit on the 5.25-5.35 GHz, 5.47-5.725 GHz and 5.725 - 5.850 GHz band when associated with an access point (AP).

FCC Label Statement

This device complies with part 15 of the FCC rules. Operation is subject to the following two conditions:

1. This device may not cause harmful interference.
2. This device must accept any interference received, including interference that may cause undesired operation.

RF Radiation Exposure Statement

For body contact during operation, this device has been tested and meets FCC RF exposure guidelines when used with an accessory that contains no metal and that positions the handset a minimum of 1.5 cm from the body. Use of other accessories may not ensure compliance with FCC RF exposure guidelines.

Canadian Compliance Statement

This Class B Digital apparatus meets all requirements of the Canadian Interference-Causing Equipment Regulations.

Cet appareil numérique de la classe B respecte les exigences du Règlement sur le matériel brouilleur du Canada.

European Conformity Statement

unitech Electronics co., Ltd herewith declares that the unitech product is in compliance with the essential requirements and all other provisions of the RED 2014/53/EU directive, the EMC 2014/30/EU directive and the Low Voltage 2014/35/EU directive.

The declaration of conformity is available for download at :

<https://portal.unitech.eu/public/Safetyregulatorystatement>

CE RF Exposure Compliance

This device meets EU requirements (2014/53/EC) on the limitation of exposure of the general public to electromagnetic fields by way of health protection.

For body-worn operation, this device has been tested and meets the ICNIRP guidelines and the European Standard EN 62209-2, for use with dedicated accessories, SAR is measured with this device at a separation of 0.5 cm to the body, while transmitting at the highest certified output power level in all frequency bands of this device. Use of other accessories which contain metals may not ensure compliance with ICNIRP exposure guidelines.

CE Mark Warning



This equipment complies with the requirements of Directive 2014/53/EC of the European Parliament and Commission from 24 May, 2014 governing Radio and Telecommunications Equipment and mutual recognition of conformity. The highest CE SAR values for the device are as follows :

0.274 W/kg @ 10g (Head)

1.470 W/kg @ 10g (Body)

RoHS Statement



This device conforms to RoHS (Restriction Of Hazardous Substances) European Union regulations that set maximum concentration limits on hazardous materials used in electrical and electronic equipment.

Waste electrical and electronic equipment (WEEE)



unitech has set up a policy and process to meet the EU directive 2002/96/EC and update 2003/108/EC concerning electronic waste disposal.

For more detailed information of the electronic waste disposal of the products you have purchased from unitech directly or via unitech's resellers, you shall either contact your local supplier or visit us at :

<https://portal.unitech.eu/public/WEEE>

Taiwan NCC Warning Statement

低功率電波輻射性電機管理辦法

第十二條：經型式認證合格之低功率射頻電機，非經許可，公司、商號或使用者均不得擅自變更頻率、加大功率或變更原設計之特性及功能。

第十四條：低功率射頻電機之使用不得影響飛航安全及干擾合法通信；經發現有干擾現象時，應立即停用，並改善至無干擾時方得繼續使用。

前項合法通信，指依電信法規定作業之無線電通信。

低功率射頻電機需忍受合法通信或工業、科學及醫療用電波輻射性電機設備之干擾。

注意事項：

1. 使用過度恐傷害視力。
2. 使用30分鐘請休息10分鐘；2歲以下幼兒不看螢幕，2歲以上每天看螢幕不要超過1小時。
3. 減少電磁波影響，請妥適使用。

SAR 標準值 2.0W/Kg，送測產品實測值為 0.217 W/kg@10g

Laser Information

The unitech product is certified in the U.S. to conform to the requirements of DHHS/CDRH 21CFR Subchapter J and to the requirements of IEC 825-1. Class II and Class 2 products are not considered to be hazardous. The unitech product contains internally a Visible Laser Diode (VLD) whose emissions do not exceed the maximum limits as set forth in the above regulations. The scanner is designed so that there is no human access to harmful laser light during normal operation, user maintenance or prescribed service operations.

The laser safety warning label required by the DHHS/IEC for the unitech product's optional laser scanner module is located on the memory compartment cover, on the back of the unit.

* Laser information only applies to the products with laser components.

CAUTION! Use of controls or adjustments or performance of procedures other than those specified herein may result in hazardous laser light. Use of optical instruments with the scanner, including binoculars, microscopes, and magnifying glasses, with will increase eye damage. This does not include eyeglasses worn by the user.

LED Information

The unitech product contains LED indicator(s) or LED ring whose luminance is not harmful to human eyes during normal operation, user maintenance or prescribed service operations.

*LED information only applies to the products with LED components.

Battery Notice

1. To guarantee optimal performance, it is recommended that rechargeable batteries be replaced every year, or after 500 charging cycles are completed. It is normal for the battery to balloon or expand after one year or 500 cycles. Although it does not cause damage, it cannot be used again and must be disposed of according to the location's safe battery disposal procedures.
2. If a battery performance decreases more than 20%, the battery is at the end of its life cycle. Stop use and ensure the battery is disposed of properly.
3. The length of time that a battery lasts depends on the battery type and how the device is used. Conserve the battery life by doing the following:
 - Avoid fully uncharging the battery because this places additional strain on it. Several partial uncharges with frequent charges are better than a fully uncharged battery. Charging a partially charged battery does not cause harm to the unit.
 - Keep the battery cool. Avoid hot vehicles. For prolonged storage, keep the battery at a 40% charge level.
 - Do not leave the battery uncharged and unused for an extended period of time, the battery will wear out and the longevity of the battery will be at least half of one with frequent charges.
4. Protect battery life by not over or under charging the battery.
5. Please do not leave battery unused for long time without charging it. Despite unitech's safety precautions, the battery pack may begin to change shape. If so, stop using it immediately. Please check to see if you are using a proper power adapter to charge the battery or contact your service provider for service.
6. If you cannot charge the battery after it has been idle for an extended period of time and it begins to heat up, please do not try to charge it. It may not be functional anymore.
7. Please only use the original battery from unitech. Using a third party battery can damage our products. Please note that when such damage occurs, it is not covered by unitech's warranty policy.

CAUTION!

- RISK OF EXPLOSION IF BATTERY IS REPLACED INCORRECTLY.
DISPOSE OF USED BATTERIES ACCORDING TO THE INSTRUCTIONS.
- 如果更換不正確之電池行事會有爆炸的風險
請依製造商說明書處理用過之電池
- 如果更換不正確之電池行事會有爆炸的風險
請依製造商說明書處理用過之電池

Battery charge notice

It is important to consider temperature when the battery pack is charging. Charging is most efficient at normal room temperature or in a slightly cooler environment. It is essential that batteries are charged within the stated range of 0°C to 40°C. Charging batteries outside of the specified range could damage the batteries and shorten their life cycle.

CAUTION! Do not charge batteries at a temperature lower than 0°C. This will make the batteries unstable and dangerous. Please use a battery temperature detecting device for a charger to ensure a safe charging temperature range.

CAUTION! To ensure the unit working properly, please keep all connectors away from the contaminants staying inside of them such as dust, grease, mud, and water. The negligence may cause the unit with no communication, short circuited, overheated and so on.

CAUTION! If the connector is damaged, please ensure the connector is being fully repaired before use the unit to avoid causing short circuited.

Storage and safety notice

Although charged batteries may be left unused for several months, their capacity may be depleted due to build up of internal resistance. If this happens, they will require recharging prior to use. Batteries may be stored at temperatures between -20°C to 60°C, however they may deplete more rapidly at higher temperatures. It is recommended to store batteries at room temperature.

** The message above only applies to the usage of the removable batteries.
For the products with non-removable batteries / without batteries, please refer to the specification of each product.*

Product Operation and Storage Notice

The unitech product has applicable operation and storage temperature conditions. Please follow the limitation of suggested temperature conditions to avoid failure, damage or malfunction.

** For applicable temperature conditions, please refer to the specification of each product.*

Adapter Notice

1. Please do not leave the power adapter in the socket when it is not connected to your unitech product for charging.
2. Please remove the power adapter when the battery is fully recharged.
3. The bundled power adapter that comes with your unitech product is not meant to be used outdoors. An adapter exposed to water or rain, or a very humid environment can cause damage to both the adapter and the product.
4. Please only use the bundled power adapter or same specification of adapter to charge your unitech product. Using the wrong power adapter can damage your unitech product.

** The message above only applies to the product connected to the adapter.
For the products without using the adapters, please refer to the specification of each product.*

Hearing Damage Warning

Zx.3 Warning

The warning shall be placed on the equipment, or on the packaging, or in the instruction manual and shall consist of the following:

- the symbol of Figure 1 with a minimum height of 5 mm; and
- the following wording, or similar :

To prevent possible hearing damage, do not listen at high volume levels for long periods.




Figure 1 – Warning label (IEC 60417-6044)

Alternatively, the entire warning may be given through the equipment display during use, when the user is asked to acknowledge activation of the higher level.

Worldwide Support

unitech's professional support team is available to quickly answer questions or assist with technical-related issues. Should an equipment problem occur, please contact the nearest unitech regional service representative.

For complete contact information please visit the Web sites listed below:

Taipei, Taiwan – Headquarters Tel: +886-2-89121122 E-mail: info@hq.ute.com Address: 5F, No. 136, Lane 235, Baoqiao Road, Xindian District, New Taipei City 231, Taiwan (R.O.C.) Website: http://www.ute.com	Europe Tel: +31-13-4609292 E-mail: info@eu.ute.com Address: Kapitein Hatterasstraat 19, 5015 BB, Tilburg, the Netherlands Website: http://eu.ute.com
China Tel: +86-59-2310-9966 E-mail: info@cn.ute.com Address: Room401C, 4F, RIHUA International Mansion, Xinfeng 3nd Road, Huoju Hi-tech District, Xiamen, Fujan , China Website: http://cn.ute.com	Japan Tel: +81-3-35232766 E-mail: info@jp.ute.com Address: Kayabacho Nagaoka Building 8F.,1-5-19 Shinkawa, Chuo-Ku, Tokyo, 104-0033, Japan Website: http://jp.ute.com
Asia & Pacific / Middle East Tel: +886-2-27911556 E-mail: info@apac.ute.com info@india.ute.com info@mideast.ute.com Address: 4F., No. 236, ShinHu 2nd Rd., NeiHu Chiu, 114, Taipei,Taiwan Website: http://apac.ute.com / http://mideast.ute.com	Latin America Tel: +52-55-5171-0528 E-mail: info@latin.ute.com Address: 17171 Park Row, Suite 210 Houston, TX 77084USA (Rep.) Website: http://latin.ute.com
North America Tel: +1-714-8916400 E-mail: info@us.ute.com / info@can.ute.com Address: 6182 Katella Ave, Cypress, CA 90630, USA Website: http://us.ute.com	Please scan QR Code to visit us : 

Warranty Policy

The following items covered under the unitech Limited Warranty are free from defects during normal use:

The warranty period is varied from each country. Please consult with your supplier or unitech local office for actual length of warranty period to your purchased product.

Warranty becomes void if equipment is modified, improperly installed or used, damaged by accident or neglect, or if any parts are improperly installed or replaced by the user.

Table of Contents

Preface

About This Manual	i
Battery Notices.....	v
<i>Battery charge notice</i>	vi
<i>Storage and safety notice</i>	vii
Warranty	vii

Chapter 1

Getting Started	1
Introducing the PA520.....	1
PA520 Product Introduction & Accessory Kit	2
Tour of the PA520.....	3
Setting up the PA520.....	5
<i>Installing the Battery</i>	5
<i>Charging the PA520</i>	6
<i>Powering On the PA520</i>	7

Chapter 2

Using the Hardware.....	9
Using the Keypad.....	9
Using the Stylus	9
Using the SDIO/MMC Slot	10

Chapter 3

Getting Connecte.....	13
Establishing Device-PC Connection	13
<i>Installing Microsoft ActiveSync.....</i>	<i>13</i>
<i>Connecting the Device to Your Computer.....</i>	<i>14</i>
WiFi Connection.....	15
<i>Using the Summit Utilities.</i>	<i>15</i>

Chapter 4

Barcode Scanner Programs.....	19
Scanner Setting.....	19
Scan2Key.....	19
<i>Barcode Symbologies</i>	<i>20</i>
<i>Barcode Symbologies 2D.....</i>	<i>21</i>

Chapter 5

Advanced Settings.....	23
Performing a Hardware Reset.....	23
<i>Performing a Warm Boot.....</i>	<i>23</i>
<i>Performing a Cold Boot.....</i>	<i>23</i>

Appendix I

System Specification	25
----------------------------	----

Appendix II

Worldwide Support	27
-------------------------	----

Chapter 1

Getting Started

Introducing the PA520


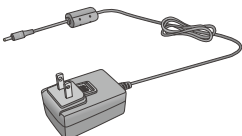
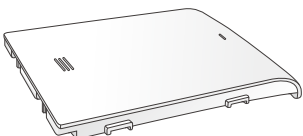

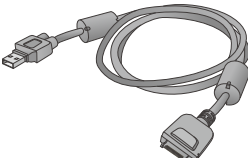

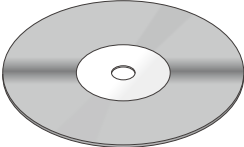
Thank you for purchasing the PA520 Data Collection Terminal. Your PA520 was designed for users who need a compact and durable portable computer for data collection and real time transactions. The unitech PA520 Data Collection Terminal is a compact mobile computing device designed for maximum durability.

Easy to Use

The unit is equipped with a color display with touch screen, a five-way directional key, and six application keys. The PA520 supports integrated long range scanners for fast and accurate data collection. The device also supports infrared interface, and wireless communication capability for exchanging information in a computing communication system.

PA520 Product Introduction & Accessory Kit

After opening the box, ensure the following accessories for the PA520 are present:

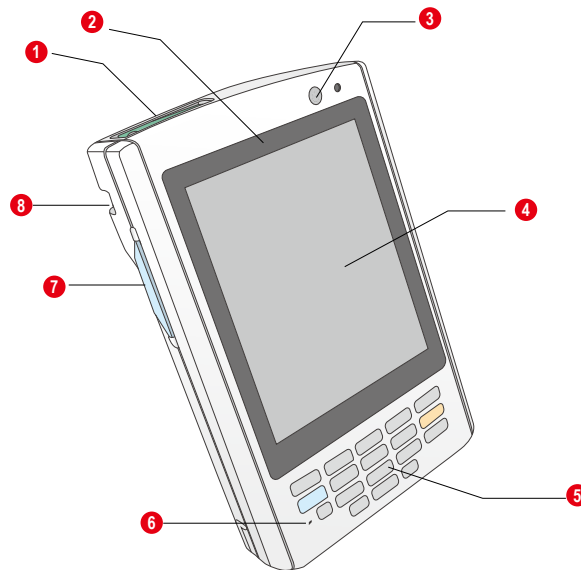
		
PA520 Terminal	Power Adapter*	Battery Pack
		
Stylus with bungee lanyard	USB charging cable	USB docking station (optional)
		
QRG/UM CD-ROM		

** The adapter's replaceable clip plugs is available, depending on the region.*

Tour of the PA520

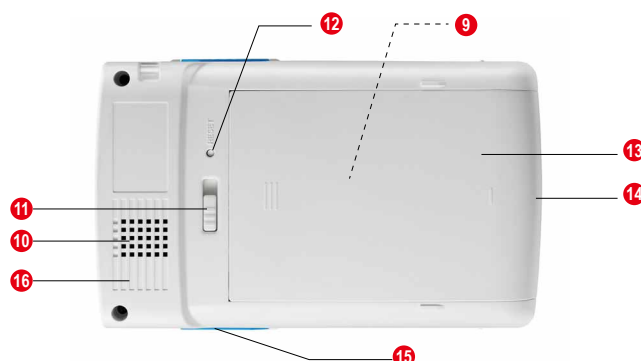
The following sections describe the main components and features of the PA520.

Front View



No.	Component	Description
1	Barcode laser scanner (optional)	Reads and captures information on a barcode label.
2	Status indicator	Indicates the battery charging and barcode scanning status. Green - Battery is fully charged, the device is running on battery power, or barcode scanning Red – Battery is being charged and barcode scanner is fired/activated.
3	Power button	If the device is off, press this button to turn it on. Alternatively, when the unit is on, this key must be pressed and held down for about two seconds in order to turn the device off.
4	LCD touch screen	Displays the applications and data stored on your device. It is touch-sensitive and responds to the stylus or finger.
5	Keypad	Includes a software keyboard button, navigation key and application buttons to launch Microsoft Outlook Mobile programs.
6	(Reserved)	
7	Left scanner trigger key	Press to activate the barcode laser scanner.
8	Cord holder	Eyelet for holding the elastic bungee lanyard.

Rear View



No.	Component	Description
9	SDIO/MMC slot	Accepts an SD (Secure Digital), MMC (Multimedia Card) or SDIO (Secure Digital Input Output) cards, allowing you to add more memory. Install add-on applications or use audio text files stored in it for use with internal applications. You can also use it to backup data from your device.
10	Speaker	When the speaker is active, sounds are emitted here.
11	Battery release latch	Slide toward the right side of the device and hold firmly, then detach the battery from its bay.
12	Reset button	Press the end of the stylus into the button to reset your device.
13	Main battery	Removable and rechargeable 3.7 V, 2200 mAh battery pack.
14	Universal connector	Connects your device to a USB charging/communication cable. This USB cable connects to the computer's USB port and accepts the 5V AC adapter to provide power to the PA520. The unit can simultaneously recharge and perform an ActiveSync operation. You can also use it to connect peripheral hardware, such as a docking station, to your device. This port can also support USB and RS232 hosting for devices such as a USB or RS232 scanner, keyboard, or USB memory key.
15	Right scanner trigger key	Press to activate the barcode laser scanner.
16	Stylus	To use the stylus, remove it from its holder and hold it the same way as you hold a pen or pencil.

Setting up the PA520

Perform the following set up tasks to begin using your device:

- Install the battery pack.
- Charge your device.
- Power on the PA520

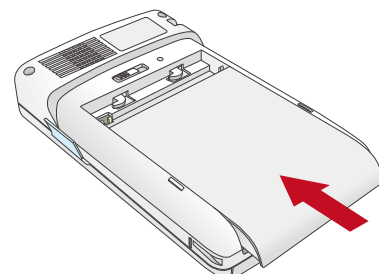
Installing the Battery

WARNING! There is a risk of fire and burns if the battery pack is handled improperly. DO NOT disassemble, crush, puncture, short external contacts, or dispose the battery pack in fire or water. DO NOT attempt to open or service the battery pack. Dispose of used batteries according to the local recycling guidelines in your area.

A backup battery cell is embedded into your device to prevent data loss when the removable battery pack is removed or completely discharged. The backup battery will keep the data and system settings up to 1 hour if the main battery is removed.

NOTE: To enable the internal battery cell to provide backup power supply, charge your device with the main battery pack for at least three and a half hours.

1. Position the battery pack, making sure the battery pack fits the shape of the battery compartment.
2. Slide the battery pack into the battery bay. The battery pack locks to the chassis with an audible click.
3. If you remove the main battery and plug it back before the backup battery lost power, PA520 will be warm start.
4. If you remove the main battery and plug it back after the backup battery lost power, PA520 will be clean booted.



Charging the PA520

For initial use, you need to charge your device for about 16 hours. After that, you can charge it everyday to recharge the battery to full capacity. You can charge your device using the USB charging cable or the docking station.

CAUTION! Operating the PA520 for the first time without the AC adapter, and without fully charging the backup battery may result in loss of data stored in RAM memory.

NOTE: Data you entered may not be properly stored until the internal backup battery has been fully charged.

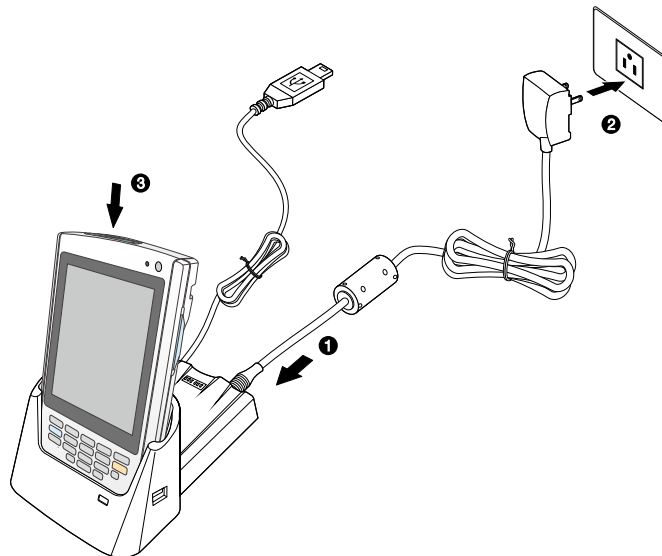
To charge the device using the USB charging cable:

1. Attach the clip plug to the AC adapter, if necessary. Slide the replaceable clip plug into the AC adapter until it locks into place with an audible click.
2. Press and hold the connector button on the USB charging cable and connect it to the PA520 (1).
3. Plug the AC adapter cable into the power jack on the USB charging cable (2).
4. Connect the AC adapter into an electrical outlet (3).



To charge the device using the docking station:



1. Plug the AC adapter cable into the power jack on the docking station.
2. Plug the AC adapter into an electrical outlet.
3. Slide the device into the docking station until it clicks into place.



The connection is secure when the bottom edge of the device is aligned smoothly with the docking station, and the LED indicator on the docking sand device lights up red.

LED status during charging:

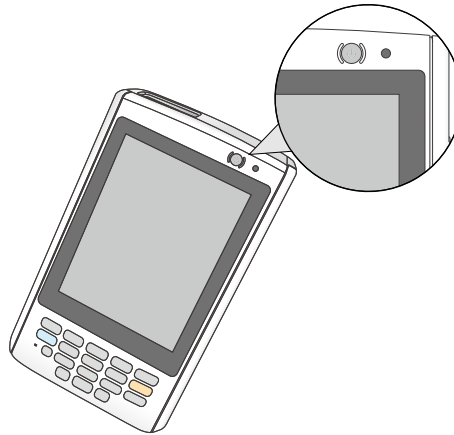
- Solid red: Charging
- Solid green: Charging complete

If the battery level becomes low, a status icon appears on the device screen indicating low  or very low battery  status. In both cases, perform an ActiveSync operation to back up your data, and then recharge your device as soon as possible. If the battery level reaches a low status, the device will enter a sleep mode and cannot be powered up until the battery is charged. Windows Mobile 5.0 devices will retain installed applications and data when the main battery is completely drained for extended periods of time.

Powering On the PA520

After you have initially charged your device for about 16 hours, the device is ready to be used. You can now start up your device where you can calibrate the screen, set up the system time zone, and learn some basic stylus usage.

1. Turn on your device by pressing the Power button  on the front panel.



NOTE: The PA520 screen ships with a protective plastic film. You may remove it by peeling from one corner. The screen will be more susceptible to scratching without the film, but will be more readable.

The unitech PA520 welcome screen appears. The Windows Mobile screen will appear shortly.

2. Calibrate the PA520

The calibrate screen will automatically appear when the unit is powered-on for the first time or after the system is reset. This screen can also be accessed at any time by tapping Start → Settings → System tab → Screen.

The PA520 will prompt you to calibrate the unit by tapping a sequence of screen locations. Tap gently but firmly. When you have completed the series of taps, press the **Enter** button to confirm it.

3. Set the Time Zone, Date, and Time

Select your current time zone from the Time zone drop-down menu, and then tap **Next**.

4. Follow all onscreen instructions to complete the set up. The setup wizard provides tips for using the pop-up menus and assign a lock password to access your device.

After the device setup, you can create an ActiveSync partnership to synchronize information between your computer and your device. See *Establishing Device-PC Connection* in chapter 3 for detailed instructions.

Chapter 2

Using the Hardware

Using the Keypad

The PA520 keypad has a navigation key and six special keys to launch particular applications and display the on-screen keyboard.

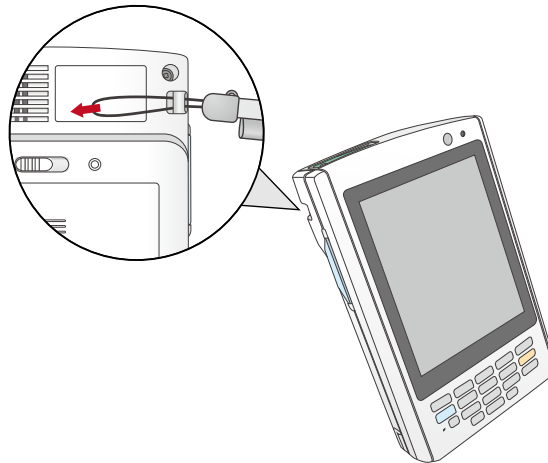


No.	Button Name	Description
1	ESC	Press the ESC button to exit from the section you entered.
2	P ₁	Press P ₁ to enable Task Manager.
3	P ₂	Press P ₂ to enable scanner.
4	P ₃	Press P ₃ to enable Battery.
5	P ₄	Press P ₄ to enable Device Setting.
6	Enter	Press the Enter button to access the menu options and confirm your selection.
7	Navigation key	Use the up, down, left, and right arrow keys to navigate through the menu options.
8	OK	Press the OK button to access the menu options and confirm your selection.

Using the Stylus

CAUTION! Never use anything other than PA520 stylus on the screen; otherwise this could cause a permanent damage.

1. Push the stylus in the direction of the arrow, then pull out to remove the stylus from its holder.




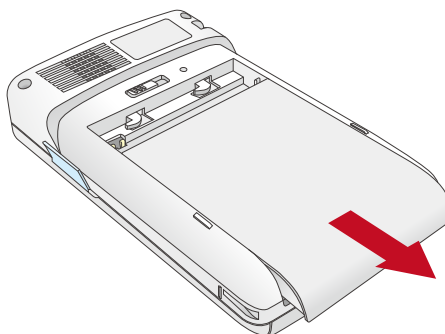
2. Hold the stylus like holding a pencil.
3. To make a choice from a menu, lightly tap the tip of the stylus on that choice.
4. To write data into a field on a form, use the stylus to print the letters or numbers (of on-screen keyboard). Use very light pressure.

Using the SDIO/MMC Slot

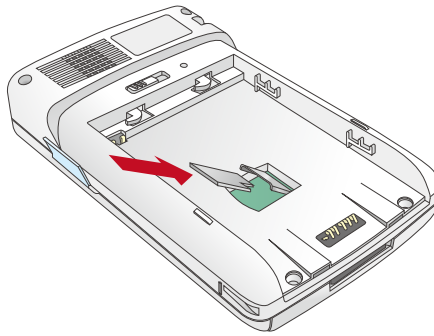
Your device has an expansion slot compatible with a range of SD, SDIO, and MMC storage cards, which are primarily used to back up or transfer files and data.

To Insert a storage Card:

1. Hold the device securely, and then lift the rubber cover from the SDIO/MMC slot .



2. Push the card into the slot until you feel the SD card click into place, and this will signal that the card is already properly seated in the slot.



The card is secure when it is not protruding from the slot.

To remove a storage card:

1. Hold the device securely. Push the card in and release. The card pops out.
2. Remove the card from the slot.

Chapter 3

Getting Connected

The PA520 enables users to link to a host computer using an RS-232, or Bluetooth, WiFi, and GPRS connection for data communication. This chapter provides an over-view of PA520 communication options.

Establishing Device-PC Connection

Installing Microsoft ActiveSync

In order to exchange data between your computer and the PA520, Microsoft Active-Sync must be installed on your computer. Use the USB/RS232 charging cable that comes with your device or the docking station to connect the device to your computer.

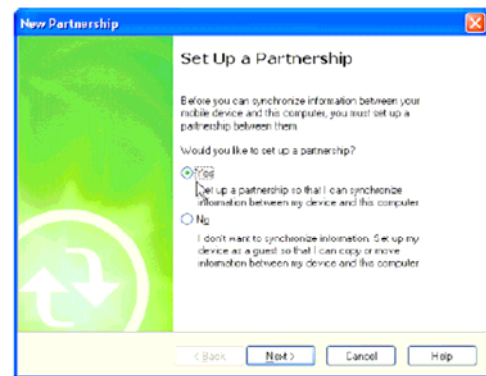
NOTE: If you have a previous version of the Microsoft ActiveSync installed in your computer, uninstall it first before installing the latest version of Microsoft ActiveSync.

To install Microsoft ActiveSync on your computer:

1. Close any open programs, including those that run at startup, and disable any virus-scanning software.
2. Download the ActiveSync software from the Microsoft ActiveSync Download page at
<http://www.microsoft.com/downloads/details.aspx?FamilyID=7269173a-28bf-4cac-a682-58d3233efb4c&DisplayLang=en>.
3. Browse to the location of the downloaded file, and double-click it. The installation wizard begins.
4. Follow the instructions on the screen to install Microsoft ActiveSync.

Connecting the Device to Your Computer

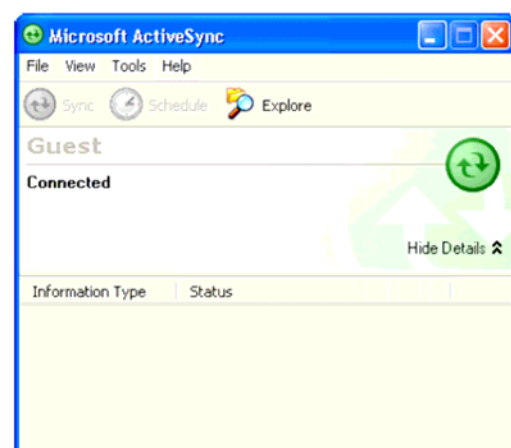
1. After ActiveSync has been installed, connect PA520 to your PC as described in connecting the terminal to a host (PC/ Notebook) to a PC.
2. Turn the PA520 on.
3. ActiveSync starts automatically and configure the USB port to work with the PA520. The New Partnership setup wizard automatically starts.



NOTE: If ActiveSync doesn't start automatically, click Start → Programs → Microsoft ActiveSync.

NOTE: If a message appears indicating that it is unable to detect a connection, click the Cancel button and manually configure the communication settings.

4. Follow the on-screen instructions.
5. When the configuration process is complete, the Active-Sync window appears.



6. Synchronization will be initialized and will take place if you've chosen to synchronize periodically or upon connection.

NOTE: Your computer can create a partnership with multiple PA520s. Also, a PA520 can create a partnership with up to two computers.

WiFi Connection

Unitech terminals come with built-in RF facility. A wireless network can be added either when the network is detected or by manually entering settings information. Before following these instructions, make sure if authentication information is needed.

Using the Summit Utilities

You can use the Summit Client Utility tool to setup or change the WiFi settings.

1. Tap Start → Setting → System → Wi-Fi.

The Summit Client Utility window appears.



2. To login as an administrator, tap Admin Login.



3. Enter the Admin Password. (Default password: SUMMIT)

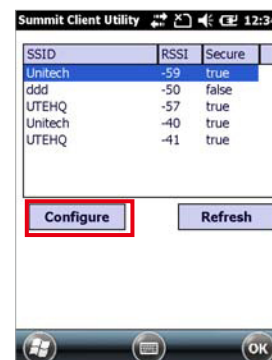


Scan Available AP

1. Under Profile tab, tap Scan for available AP.



2. You may select a desired AP to create a new profile. Tap Configure.



3. Tap Yes to create the new profile.

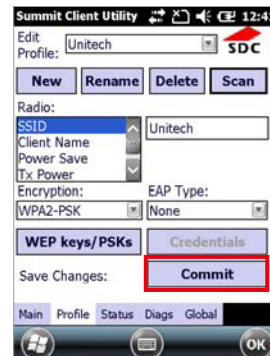


4. Enter the WEP key or network key. Tap OK.



Commit and Activate

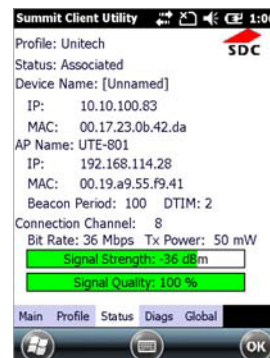
1. Tap Commit to activate the setting.



2. Under Main tab, select the profile you want to activate.



3. Under Status tab, you can see the IP address, signal strength and quality.



4. Tap OK to exit the Summit Client Utility.
5. Tap Start → Boot-Mode. Tap Warm Boot to warm start the terminal and load the previous settings.
6. If you want to disconnect the AP, tap Disable Radio.



Chapter 4

Barcode Scanner Programs

PA520 provides an option for the barcode scanner, allowing you to scan and decode various types of 1D/2D barcodes.

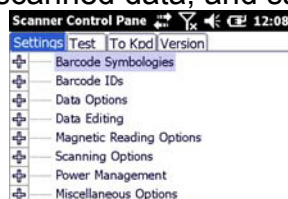
Scanner Setting

When it is necessary for the user to change the default barcode symbology for a different application, the Scanner Control Panel provides the ability to change default symbology, place delimiter characters behind scanned data, and save the settings.

Tap Start → Settings → System → Scanner.

The Scanner Control Panel appears.

NOTE: Press Func key and “7” button.



Scan2Key

The Scan2Key application routes input from a scanner port to a keypad buffer, making all input from the scanner emulate input from the keypad. Using Scan2Key, scanned data will be directed from the scanner port to any waiting (active/focused) text editor such as MS Mobile Word or a text box in an application.



Barcode Symbolologies

Barcode Symbology	Enable / Disable	Char Check / Digit verification	Transmit Check Char / digit	Others
Australian Post	YES			Send bar width data
British Post	YES			
Canadian Post	YES			
Codabar	YES	YES	YES	Transmit start & stop char, *data length
Code 11	YES	YES		*data length
Code 128/ EAN 128	YES			*data length
Code 39	YES	YES	YES	For ASCII, Transmit start & stop char, Append mode, *data length
Code 93	YES			*data length
Dutch (KIX) Post	YES			
EAN 13	YES		YES	2 digit addenda, 5 digit addenda, Addenda required, Include addenda separator
EAN 8	YES		YES	2 digit addenda, 5 digit addenda, Addenda required, Include addenda separator
IATA 2 of 5	YES			*data length
Interleaved 2 of 5	YES	YES	YES	*data length
ISBT	YES			
Japanese Post	YES			
Korean Post	YES			*data length
Matrix 2 of 5	YES			*data length
MSI	YES		YES	*data length
Planet	YES		YES	
Postnet	YES		YES	
RSS (Databa	YES		YES	*data length

Barcode Symbology	Enable / Disable	Char Check / Digit verification	Transmit Check Char / digit	Others
UPC A	YES			2 digit addenda, 5 digit addenda, Addendse a required, Include addenda parator, Send number system
UPC E	YES		YES	2 digit addenda, 5 digit addenda, nd number system, Addenda required, Include addenda separator, Se Expanded UPC-E
UPC E1	YES		YES	2 digit addenda, 5 digit addenda, Addenda required, Include addenda separator, Send number system, Expanded UPC-E

NOTE: *Value Adjustable Scanner Control Panel Version 5.14

Barcode Symbolologies 2D

Barcode Symbology	Enable / Disable	Char Check / Digit verification	Transmit Check Char / digit	Others
Aztec	YES			Runes, *data length
Codablock F	YES			*data length
Code 49	YES			*data length
Data Matrix	YES			*data length
EANEAN-UCC Composite	YES			UPC composite, *data length
MaxiCode	YES			*data length
MicroPDF - 417	YES			*data length
OCR	YES			
PDF- 417	YES			*data length
QR Code	YES			
TLC-39 (TCIF Linked Code 39)	YES			

NOTE: *Value Adjustable Scanner Control Panel Version 5.14

Chapter 5

Advanced Settings

Performing a Hardware Reset

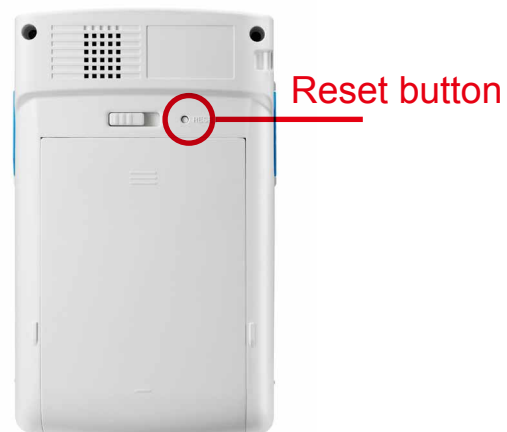
You may have to perform a reset if the device freezes (i.e., the device no longer responds to the buttons or tapping on the screen).

A soft reset allows your device to get a fresh start, similar to rebooting a computer.

This will restart your device and adjust memory allocation. All records and entries are retained after a soft reset. Unsaved data in open programs may be lost.

Performing a Warm Boot

1. Remove the stylus from its holder.
2. Lightly press the tip of the stylus to the reset button located at the rear side of the terminal.



Performing a Cold Boot

A cold boot will erase all data and all programs you have added, and will restore the device to the default factory settings.

Never perform a cold boot unless a warm boot does not correct your problem.

When you perform your next ActiveSync operation, you can restore any data that you previously synchronized to your computer or you can restore data that you backed up to a storage card..

Method 1: From Windows Mobile

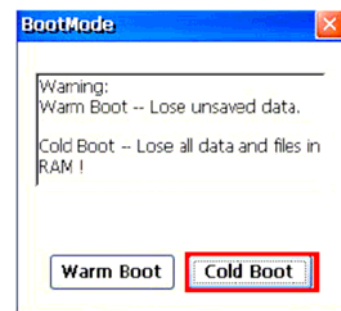
1. Tap Start → BootMode.

The BootMode Screen appears.



2. Tap Cold Boot.

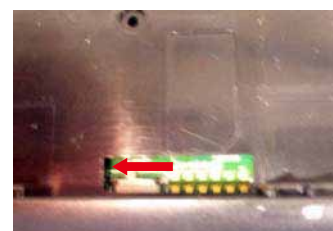
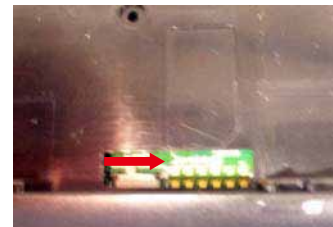
The system is reset and you will lose all data including all files in the RAM memory.



Method 2: From Hardware

1. Remove the battery compartment cover and the main battery. See the section of Installing the Battery.
2. Turn the backup battery switch off.
3. Turn the backup battery switch on.
4. Cover the battery compartment with the battery.

NOTE: When you perform hard reset, the data and time settings will not be retained. Formats, preferences, and other settings are restored to their default factory settings.



Appendix I

System Specification

System	CPU: Marvell PXA320 Processor, 806MHz Mobile DDR RAM: 256MB NAND Flash RAM: 512MB OS: Windows Embedded Handheld 6.5 Classic
Display	Transflective color 3.5" QVGA with backlight 240×320 touch panel LCD
Keypad	4 function keys + Navigation keys
Notification	LED
Symbologies	1D Barcode EngineUPC-A/E, EAN-8/13, Codabar, Code 39, Code 39 full ASCII, Code 93, Code32, Interleaved & Std. 2 of 5, EAN 128, Code 11, Delta, MSI/Plessey, Code 128, Toshiba
Indicator	Dual Function LED Green (Data scanning) Red (Charging status)
Communication	USB: USB1.1 Host & Client WLAN: IEEE 802.11 b/g/n .
Audio	0.8 Watts Speaker
Expansion Slot	SD Memory with SDHC Support (up to 32GB)
Power Source	Main Battery: 8.14 Watt-Hour 3.7V @2200 mAh Backup Battery: Ni-Mh battery Supports 2 hours backup
Enclosure	Weight: 213g (with battery) Dimension: 126mm (L) x 25mm (H) x 77mm (W)
Environmental	Operating Temperature: 14°F to 122°F (-10°C to 50°C) Storage Temperature: -4°F to 140°F (-20°C to 60°C) Charging Temperature: 32°F to 104°F (0°C to 40° C) Relative Humidity: 5% ~ 95% (non-condensing) Drop Test to Concrete: 3 feet (90 cm) on 6 faces/4 corners to concrete

Software	Microsoft Visual Studio 2005/2008 Auto Installer
Mobile Device Management Software and Service	12Manage: Software and configuration management, Asset tracking, remote diagnostics and performance measurement (For more detailed information, please visit http://portal.unitech.eu/RDM/v2/v2login.aspx)
Accessories	USB cradle with battery charger Main battery (2200mAh) USB communication and charging cable AC adaptor
Regulatory Approvals	CE, FCC, BSMI, VCCI, CCC, RoHS compliance

Radio type / Description		Transmitter Frequency	Maximum Output Power
WLAN 2.4GHz	IEEE 802.11b	2400-2483.5MHz	17dBm
	IEEE 802.11g	2400-2483.5MHz	15dBm
	IEEE 802.11n	2400-2483.5MHz	15dBm
WLAN 5GHz	IEEE 802.11a	5150-5350MHz	16dBm
		5470-5725MHz	16dBm
	IEEE 802.11n	5150-5350MHz	16dBm
		5470-5725MHz	16dBm
RFID	NFC	13.56MHz	Under 500mW

NOTE:

Requirements in

AT/BE/BG/CZ/DK/EE/FR/DE/IS/IE/IT/EL/ES/CY/LV/LI/LT/LU/HU/MT/NL/NO/PL/PT/RO/SI/SK/TR/FI/SE/CH/UK/HR. 5150MHz~5350MHz is for indoor use only.

Appendix II

Worldwide Support

Unitech's professional support team is available to quickly answer questions or technical-related issues. Should an equipment problem occur, please contact the nearest Unitech regional service representative. For complete contact information please visit the Web sites listed below:

Region	Web Site
Global Operation Center	http://www.ute.com
Unitech Taiwan	http://tw.ute.com
Unitech Asia Pacific & Middle East	http://apac.ute.com http://india.ute.com
Greater China Division	http://cn.ute.com
Unitech Japan	http://jp.ute.com
Unitech North America	http://us.ute.com ; http://can.ute.com
Unitech Latin America	http://latin.ute.com
Unitech Europe	http://eu.ute.com