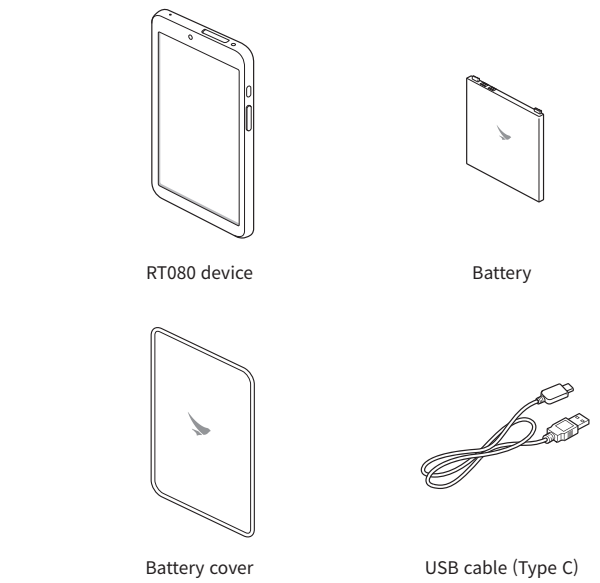


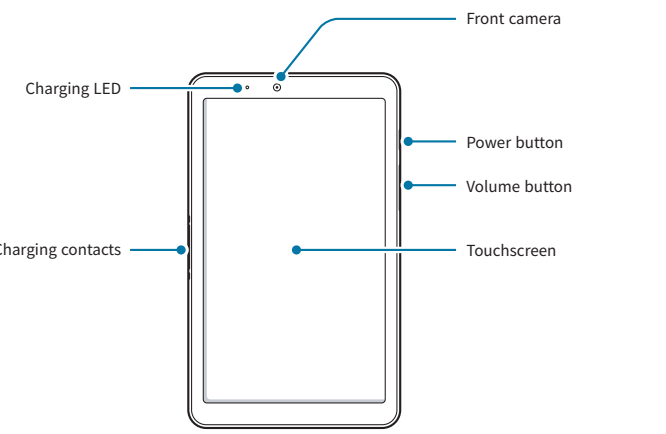
Package Contents



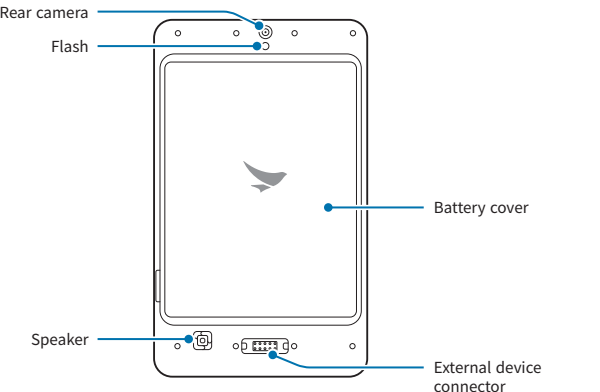
✓ The illustrations may differ from your actual items.

Product Overview

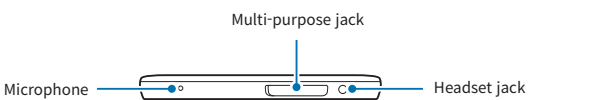
Front



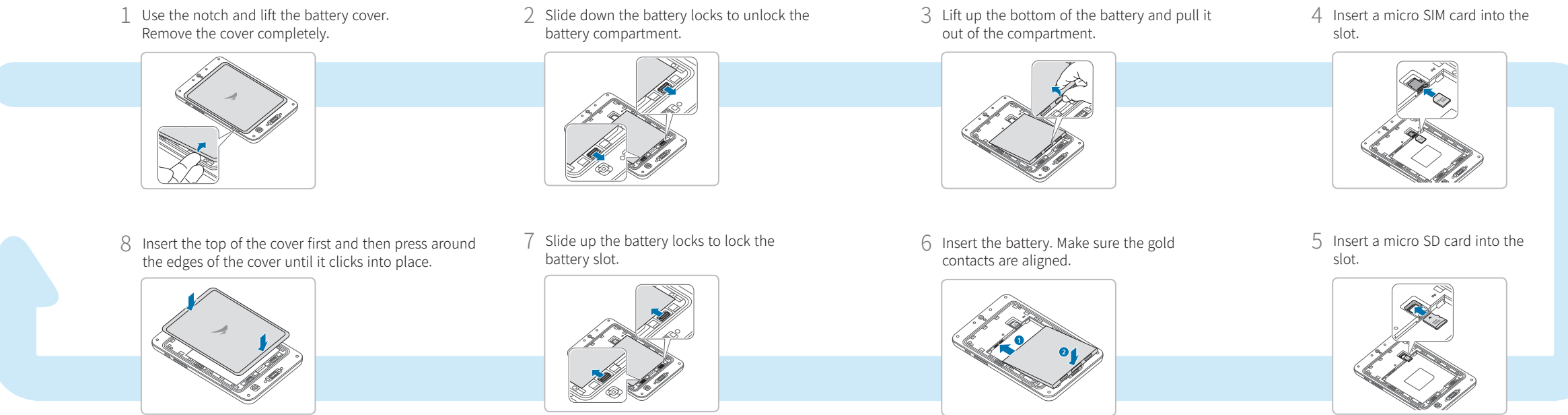
Back



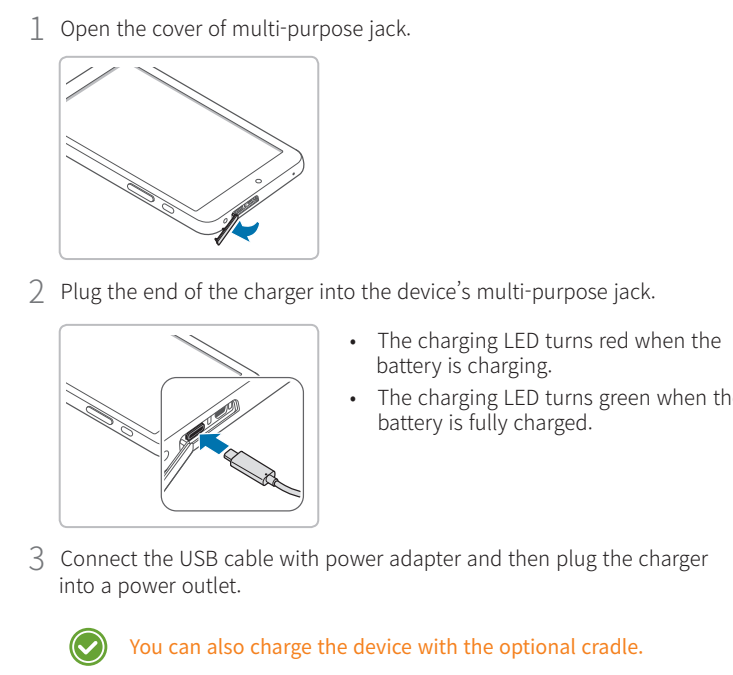
Top



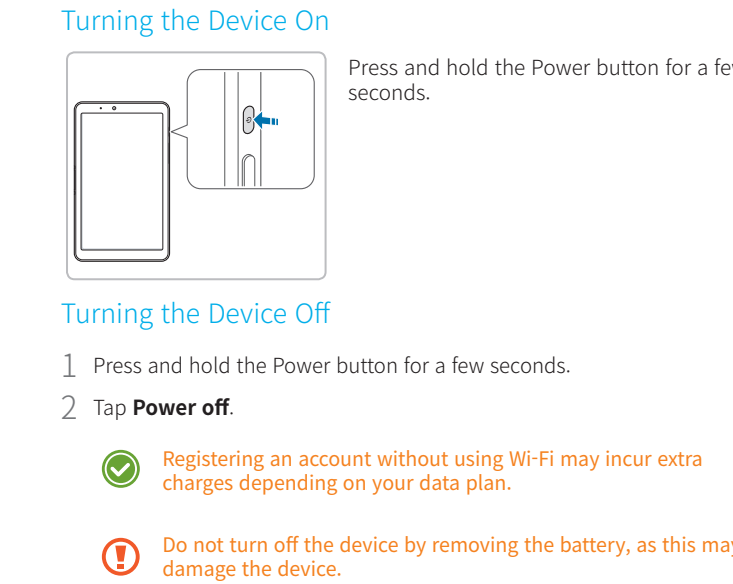
Installing the Battery and Cards



Charging the Battery



Turning the Device On and Off





BLUEBIRD CUSTOMER SERVICE

Operating Hours

Monday to Friday 9:30 A.M. ~ 6:30 P.M.
(GMT Time: +9 Hours)
The center is closed on Saturdays,
Sundays, and Korean national holidays.

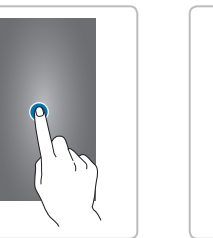
Customer Service Center

#1103, Gplus Kolon Digital Tower 11F,
Digital-ro 26-gil 123, Guro-gu, Seoul,
Republic of Korea(08390)

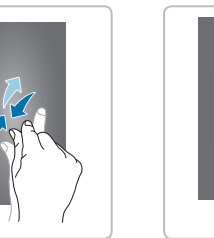
Bluebird constantly strives to bring utmost satisfaction to all our customers.

Using the Touchscreen

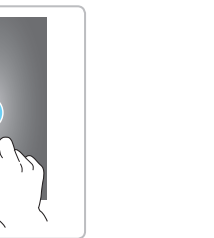
Follow the instructions below to correctly use the touchscreen.



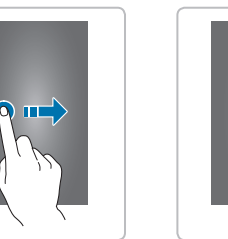
Tap



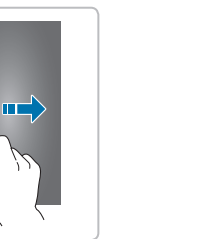
Zoom in or out



Tap and hold



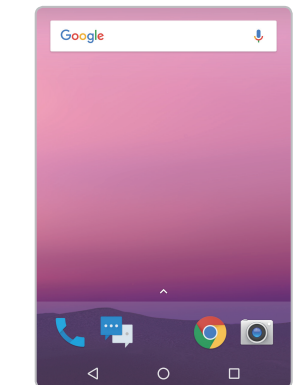
Swipe

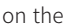


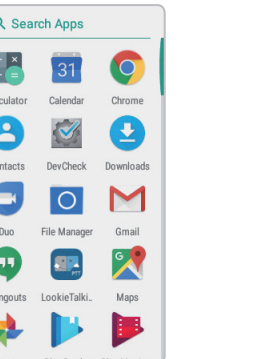
Drag

Using the Home Screen



The Home screen is the starting point for all apps and features. It displays icons, shortcuts, and widgets.



Tap  on the Home screen to access your apps.
Swipe down to search for an app you want to open, or a feature you want to use.



Connecting to a Wi-Fi Network

On the Home screen, tap  >  **Wi-Fi**.
Turn on Wi-Fi and tap the network you want to join.



If necessary, enter the password for the network. If you don't know the password, contact the network administrator.

Connecting via Bluetooth

On the Home screen, tap  >  **Bluetooth**.
Turn on Bluetooth and tap the device name you want to pair.

Accessories

Standard

- Battery: 6,000 mAh
- Battery cover
- USB cable (Type C)

Optional

- Cradles
 - One Slot Cradle: Charging only



The power adapter, AC power plug and AC power cable require the use of charging cradles.

- Power adapter for direct charging
- Adapter plug
- Vehicle charger
- Vehicle mounting cradle

More Information

Warranty Information

Bluebird Inc. (hereinafter referred to as Bluebird) provides the warranty service for its products in compliance with the Bluebird's warranty program.

Upon receiving a notification on a defect of its product within the range of warranty during the warranty period, Bluebird will repair or replace the defective product according to its warranty policy.

If the defective product within the range of warranty is not repairable or replaceable, Bluebird shall refund the purchasing price within a designated period from the date of receiving a notice of defect.

Bluebird assumes no responsibility for repairing, replacement or refund until it receives the defective product from the customer. The replacement shall be equivalent to a new product in the aspect of performance.

This warranty is applied to software products only when the programming commands are not executed. Bluebird does not guarantee interruption-free or error-free performance.

For more warranty information, see the User Manual.

User Manual

For more details on your device, you can download the user manual from <http://www.bluebirdcorp.com/products/Mobile-Computers/Handheld-Computers/RT080>. The paper version may be available for some regions.

Smart Rugged Tablet Computer

RT080

QUICK
GUIDE

BLUEBIRD

