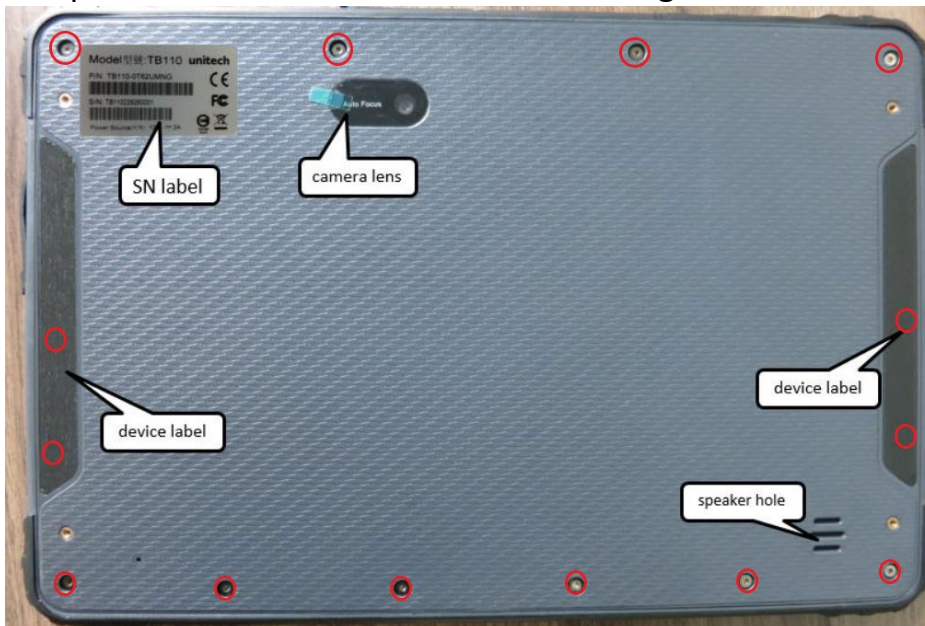


TB110 Work Instruction: Replace Battery

Operation Steps:

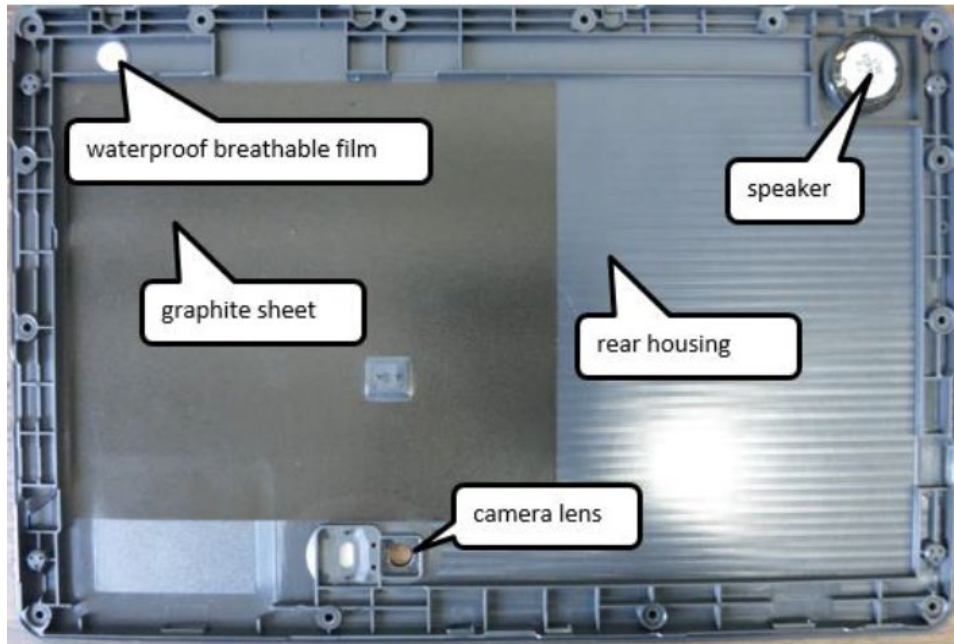
Disassembly Steps:

1. Disassemble the device labels on the right side and left side.
 - Use a knife to lift the edge of the device label and then tear it off.
 - Please carefully operate when you tear off the device label.
2. Disassemble the rear housing of TB110, please use the T6 screwdriver.
3. The position of the screw is shown below figure:

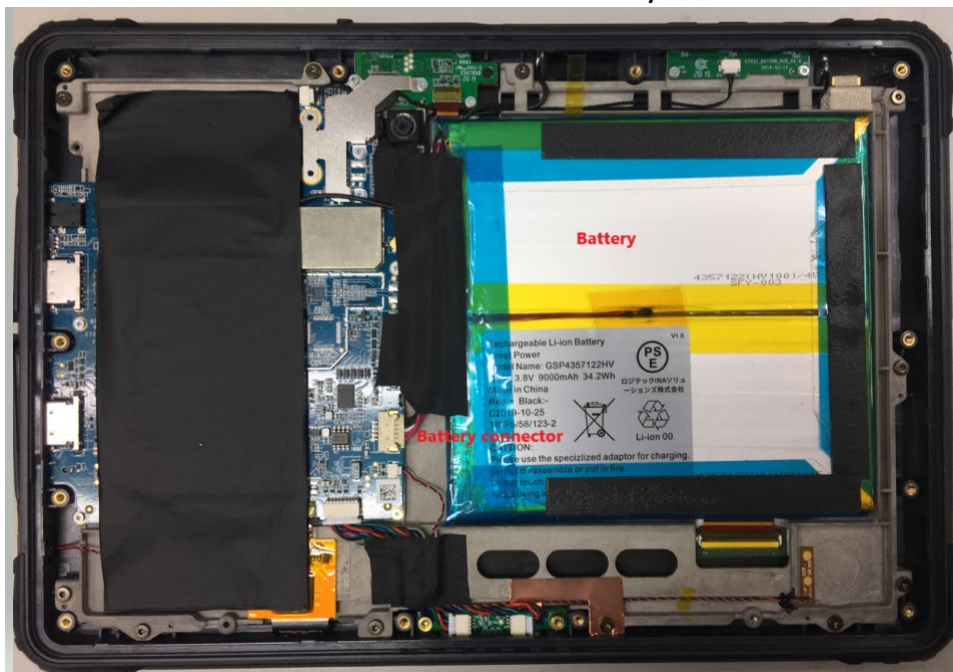


4. Please remove 14 screws by the below order.

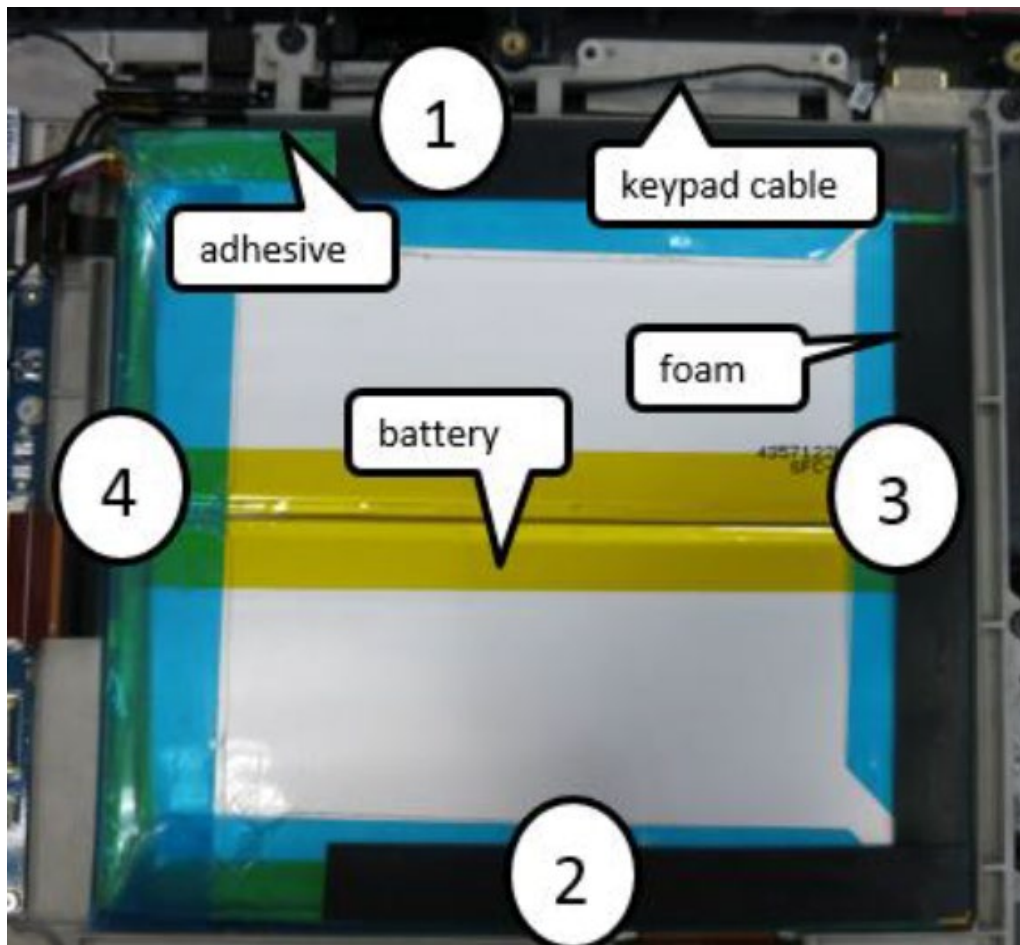




5. After disassembling the screws and remove the rear housing. You can see the battery connector and battery. Please use a tweezer to remove the battery connector.



6. Disassembly the battery.
 - Tear off the adhesive by order, do not use sharp tools to avoid puncturing the battery.
 - Remove the battery from the middle housing.



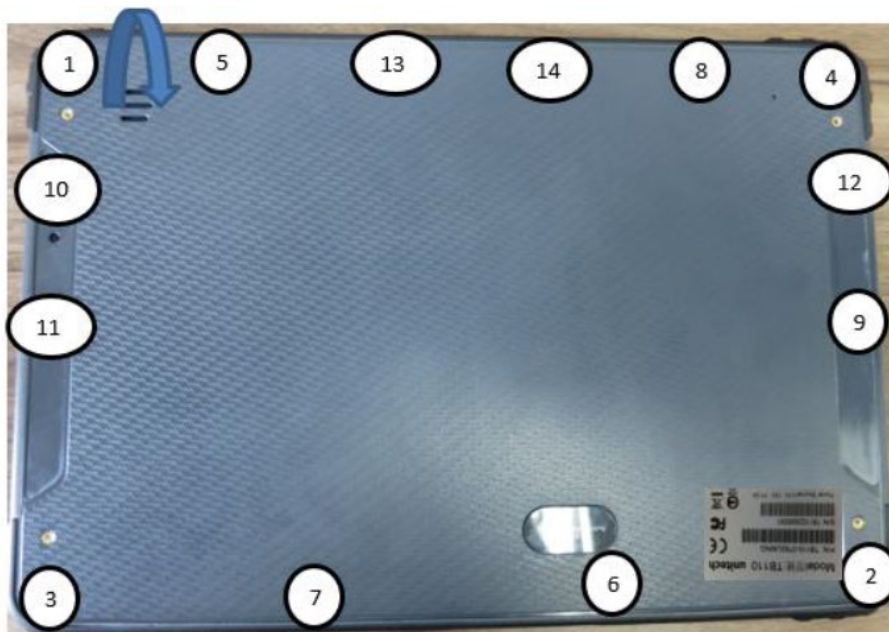
7. The battery was separated from TB110 as shown in the below figure:



8. Please replace a new battery and plug the battery into the battery connector.



9. Assemble the rear housing back.



Key Part List:

- Battery/ 206659G Battery_4507251002_TB110 spare parts

