

2D Barcode Scanner

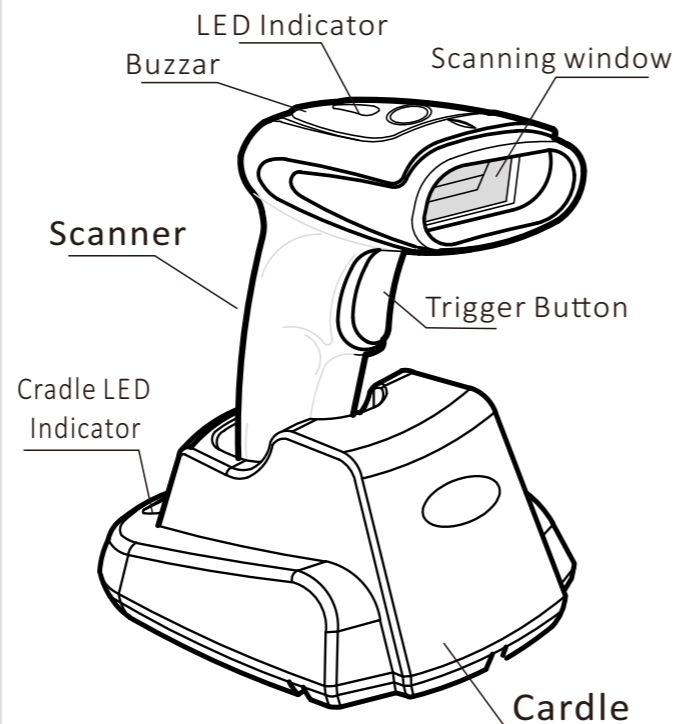
Quick Start Guide



Contents: ● Barcode Scanner ● Cradle
● Quick Start Guide
● USB / RS232 Cable
● Power Adapter (Rs232 only)

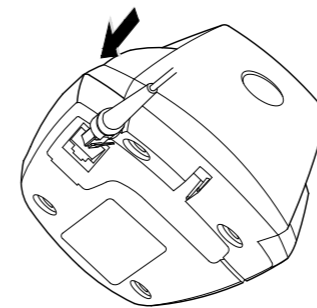
No.:1230247001 v1.0

1 Scanner overview

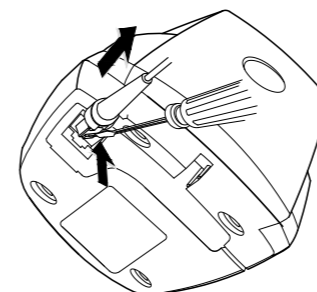


Note: Product appearance depends on goods

2 Cable plug&Unplug



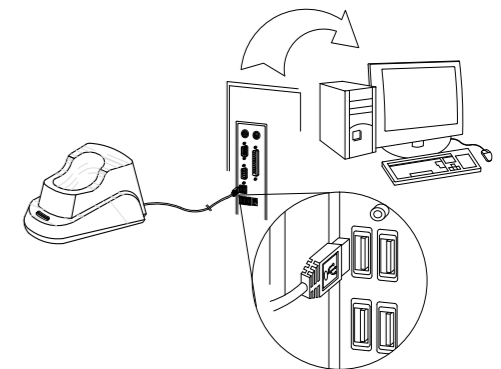
① Plug as picture above



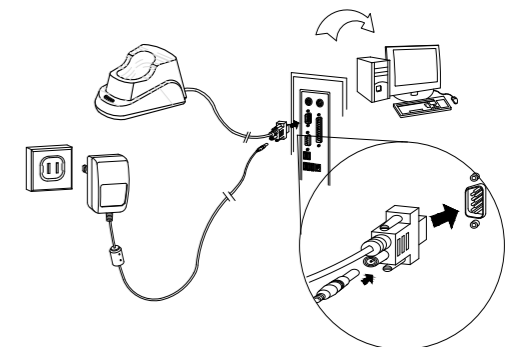
② Press the buckle click, then pull out the cable

3 Cable connection guide

(1) USB Data cable



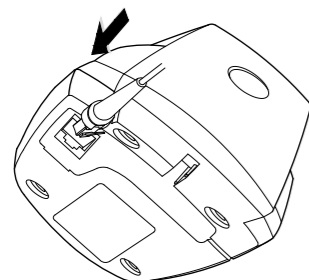
(2) RS232 Data cable



4 Pairing Guide Method

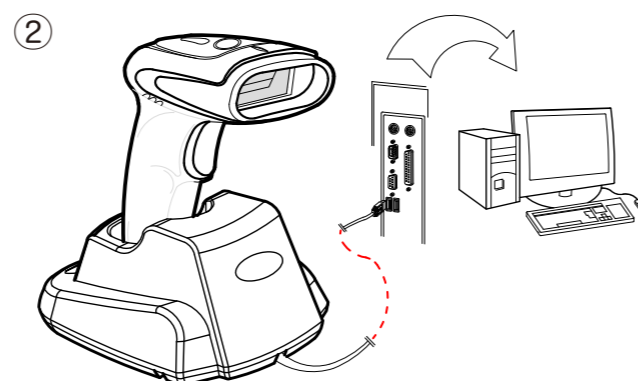
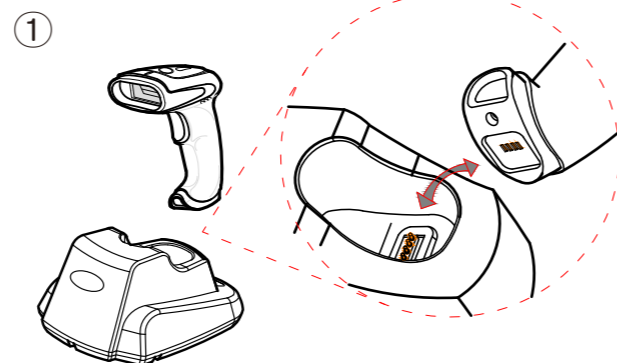
First step: Insert the cradle as above picture. the green light of the cradle will continue (on not able to pair when green light flashing.)

Second step: After insert the cradle , it must be scan the below bar code within 20s

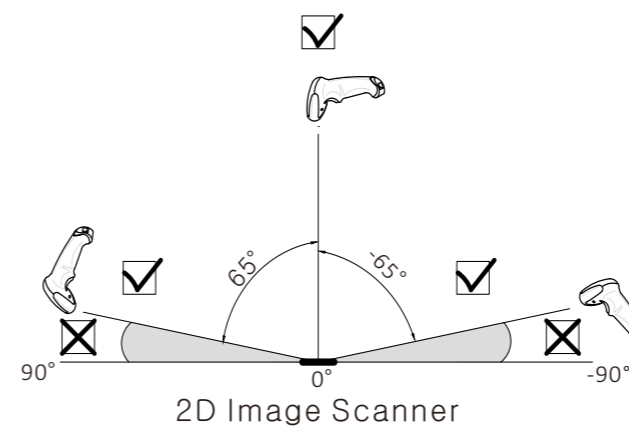


Pair in one step

5 Charging method



6 Scanning Angle



The aiming beam should be centered over the bar code, but it can be positioned in any direction for a good read.

? Troubleshooting Q&A:

Q1:After scanning data. the scanner have sound of "du du du" three times means the data not uploaded.
A1:Pair again Follow " Pairing" process.

Q2:No data upload after scanning, but no warning tore.
A2:Scan "Realtime mode" barcode(in the "working mode").

Q3:Press the button. no beam comes out of the scanner.
A3:Low power. please charge the scanner.

Wierless Settings

This part is valid for wireless settings only

①Defaults Parameter

The default setting allows the scanner to be restored to the factory setting state.

Set up process :

- ① Scan the bar code of“Enter Setting”.



- ② Scan the bar code of “Restore Defaults”.



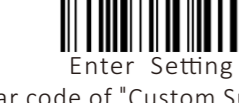
- ③ Scan the bar code of "Exit and Save".



⑤Suffix

Set up process :

- ① Scan the bar code of“Enter Setting”.



- ② Scan the bar code of "Custom Suffix".



- ③ Scan one of bar code below as suffix



- ④ Scan the bar code of “Exit and Save”.



②Working mode

Real time mode: Scan and transmit, data will automatically lost if upload failed.

Cache mode: Same as real time mode if connection normal. Scan bar codes will be automatically restore if connection failed. Will upload one by one if connection return as normal.

Inventory Mode: Scanning bar codes will be restored without upload.

Configuration method: Scan the function bar code directly.



③Inventory Setting

This part is valid for inventory mode only

Upload data: Bar code data will transmit to terminal once scan this bar code.

Date sum: Scan “Data sum”bar code to check the scanner restore data sum.

Clear data: Scan “Clear data” and clear all the restore data in scanner.

Configuration method: Scan the function bar code directly.



④Sleep Time Setting

The sleep time means the time between the last operation move and auto turn off the scanner. User able to scan the corresponding bar code of the sleep time which is needed to accomplish the sleep time setting.

Set up process :

- ① Scan the bar code of“Sleep Time”.



- ② Scan one of the bar code below as sleep time.



- ③ Scan the bar code of “Exit and Save”.



⑥Numeric Keypad

This functions is useful when using non-English OS and Keyboard layout.

Configuration method: Scan the function bar code directly.



Light

LED Status	Description
Scanner	
Green light on	Power on/ Working normally
Red light blinks	Pairing match
Green light blinks once	Upload successfully
Green light blinks twice	Upload failed
Red light on	Low battery
Blue light on	Charging normal
Green light on	Charging complete
Green light blinking	Pairing unsuccessful

Cradle

Green light blinks 30s	Pairing state
Red light on	USB identify failed
Green light blinks once	Uploaded successfully
Green light on	Working normally

Buzzer

Scanner beeper mode	Description
Four Beeps	power On
Short three beeps	Pairing successfully
Short one beep	Scan and transmit successfully
Short three beeps	Data upload failed
short one beep	Power off
Long short beep	Enter Setting Mode
Craddle beeper mode	Description
Four Beeps	power On
Short one beep	Scan and transmit successfully